

Discovery Early Learning Centres — Vacation Care Program

Ravenswood Vacation Care

**Monday
14th April**

Beat the Buzzer

Can you beat the buzzer?
We kick off vacation care with some minute to win it challenges!
In the afternoon, let's test some wacky science theories... Like, will ink powered leaves really zoom? We will also join in for some Easter crafts and a little egg hunt.

Throughout the holidays we will have access to a variety of experiences promoting self-selection. These include, board games, arts and craft, cooking, sporting games in the local park, woodwork, reading, sensory experiences, and more.

Pack: Lunch, water drink bottle, sun safe hat, appropriate footwear and clothing for the weather

**Tuesday
15th April**

Off too the Zoo!

Woohoo, Were of to the zoo!
Today we'll head to the Tasmania zoo where A devil of a time awaits. We'll be able to check out the new additions and seek out our favorite animals and feed a few. We'll join in the picnic space for lunch and checkout the gift shop on the way out.

Children can bring up to \$10 for the gift shop if they wish



**Bus departs 10:30am
Returning 2:30pm**



Pack: Lunch, water drink bottle, sun safe hat, appropriate footwear and clothing for the weather

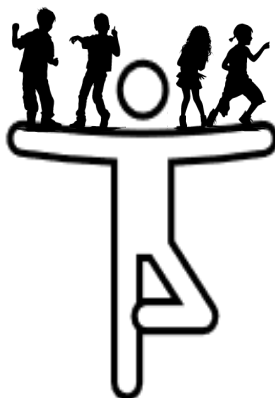
**Wednesday
16th April**

Minds. Bodies & Besties

Henna body art, friendship bracelets, and how about some yoga?!

Today we'll focus on our minds, bodies and BESTIES.

We'll also join together for a game of Charades, some karaoke and a movie towards the afternoon!



Pack: Lunch, water drink bottle, sun safe hat, appropriate footwear and clothing for the weather

**Thursday
17th April**

Capturing Connection

Today is all about connection!
We will set out on an adventure through the Bells Parade Reserve for a bushwalk!
We will be meeting our Ulverstone friends and will join them for a picnic lunch, walk on country and explore the grounds.

"They say beauty is in the eye of the beholder" so today we will use iPads and polaroid's to capture photos of the land, flora and fauna or friends, to bring back to the service to use in our scrapbooks.

**Discovery bus leaving at
9:30am, returning 3pm**



Pack: Lunch, water drink bottle, sun safe hat, Gumboots/ bushwalking shoes and appropriate clothing for the weather

**Friday
18th April**

Public Holiday
Centre Closed

Morning and afternoon tea will be provided each day. Please pack a lunch for your child everyday unless otherwise advised. If the day includes an excursion or incursion a fee of \$15.00 will be added to your account.

There will be a number of other experiences on offer each day including: painting, construction, craft activities, ball games, sports activities, outside play, music, board games, jewellery making etc.

Discovery Early Learning Centres — Vacation Care Program

Ravenswood Vacation Care

**Monday
21st April**

Public Holiday
Centre Closed

**Tuesday
22nd April**

Beach 'n Park

Join us on an adventure to the Gravelly beach and park for a fun excursion.

We will utilise the Gravelly Beach park lands for a picnic lunch and play. Bring along your scooter for a skate at the Gravelly beach community skate park! We will then head down to the beach to see what treasures we can find and what sea life lurks along the shoreline.

**Discovery bus leaving at
10am, returning 2pm**



Pack: Lunch, water drink bottle, sun safe hat, appropriate footwear and clothing for the weather, scooter, and helmet

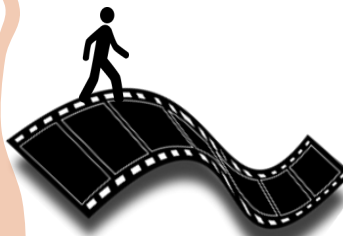
**Wednesday
23rd April**

Movie Time

Today we will be heading out to watch a new released movie (to be confirmed) on the big screen with a popcorn snack to complete the experience. After the movie we will head to the Heritage Forest to explore the playground and walking tracks.



**Bus departs 10am
Returning 3pm**



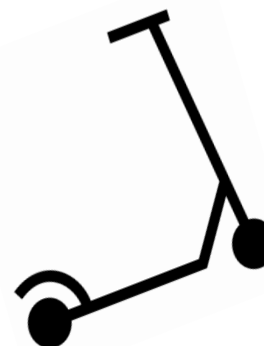
Pack: Lunch, water drink bottle, sun safe hat, appropriate footwear and clothing for the weather

**Thursday
24th April**

George Town Park

Of we go to explore the George Town park. Let's enjoy a picnic lunch, ziplining, and explore the five different play spaces together. Bring along your scooter for a zoom around the skate park (don't forget your helmet!)

**Discovery bus leaving at
10am, returning 2pm**



Pack: Lunch, water drink bottle, sun safe hat, appropriate footwear and clothing for the weather, scooter, and helmet

**Friday
25th April**

Public Holiday
Centre Closed

Morning and afternoon tea will be provided each day. Please pack a lunch for your child everyday unless otherwise advised. If the day includes an excursion or incursion a fee of \$15.00 will be added to your account.

There will be a number of other experiences on offer each day including: painting, construction, craft activities, ball games, sports activities, outside play, music, board games, jewellery making etc.